



Weekly Epidemiologist Report

July 17, 2023

Prepared by: Christine M. DePierro-Gacek, Epidemiologist

LEAD

Due to extreme temperatures this winter, steel bridge structures across the State have experienced a sudden, unexpected release of lead-based paint chips. The Department of Transportation (DOT) in coordination with the Department of Energy and Environmental Protection (DEEP) have deployed cleanup efforts. Residents are advised to follow these practices to minimize their exposure to lead:

- Do not handle or move the paint chips.
- Avoid walking through or disturbing the paint chips.
- Pedestrians who encounter areas of paint-release on roadway travel surfaces should limit their time in these areas as traffic may crush the paint chips and create lead dust.

The table below is a list of bridges in the Central Connecticut Health District impacted by the sudden release of lead-based paint chips. If you live or walk by the following areas, please follow the practices listed above. Make sure to wash your hands before eating and remove shoes before entering your home to prevent tracking lead dust inside. For more information on lead visit: <https://portal.ct.gov/DPH/Environmental-Health/Lead-Poisoning-Prevention-and-Control/About-Lead>.

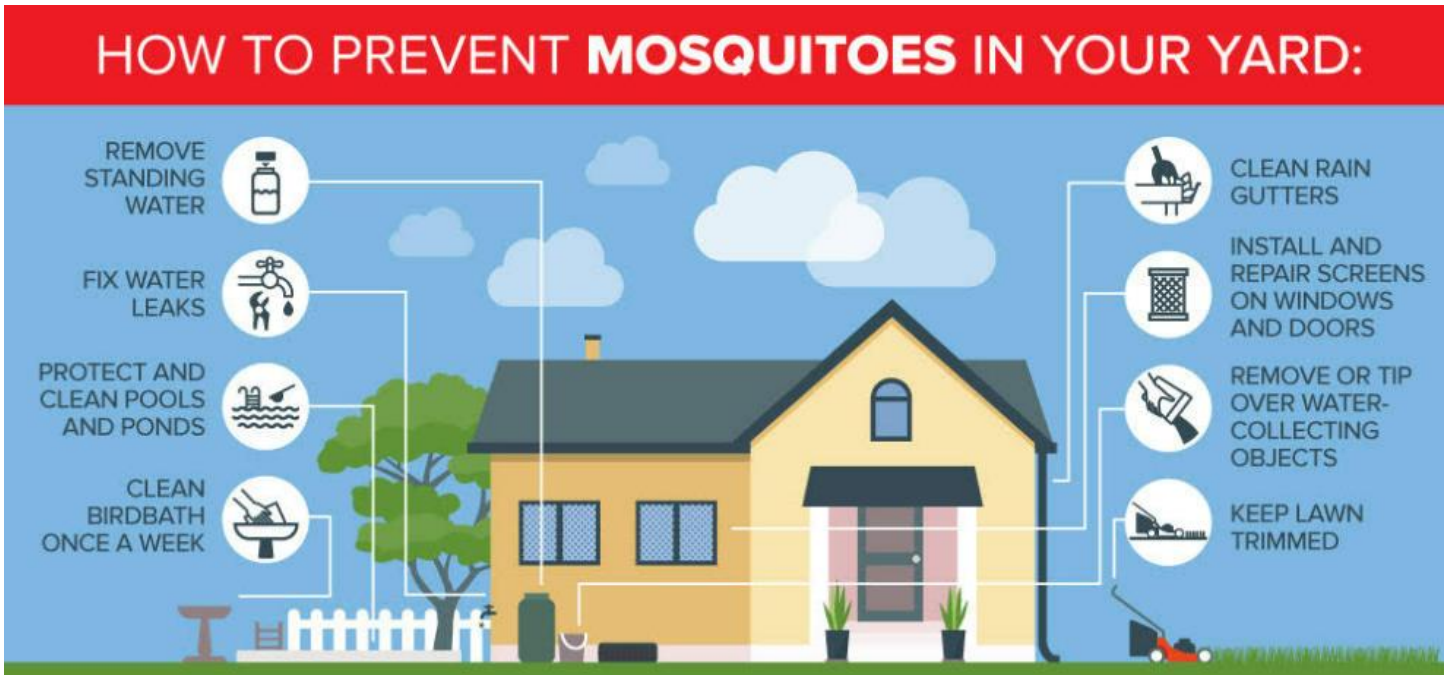
Road	Highway	Town
WEBSTER SQUARE ROAD	ROUTE 9 NORTHBOUND	Berlin
WEBSTER SQUARE ROAD	ROUTE 9 SOUTHBOUND	Berlin
CHRISTIAN LANE	ROUTE 9	Berlin
PRIVATE PROPERTY	ROUTE 9 SOUTHBOUND	Berlin
ROUTE 99	INTERSTATE-91 NB	Rocky Hill
ROUTE 99	INTERSTATE-91 SB	Rocky Hill
ROUTE 3	I-91 & DIVIDEND BROOK	Rocky Hill
SSR 411 (WEST STREET)	INTERSTATE-91 & NB RAMP	Rocky Hill
FOLLY BROOK BOULEVARD	ROUTE 15	Wethersfield
PROVIDENCE & WORCESTER RR	INTERSTATE-91 NB	Wethersfield
MIDDLETOWN AVENUE	INTERSTATE-91 SB	Wethersfield
ELM STREET	INTERSTATE-91 NB	Wethersfield
ELM STREET	INTERSTATE-91 SB	Wethersfield
MIDDLETOWN AVENUE	INTERSTATE-91 NB	Wethersfield
GREAT MEADOW RD & CT RV.	ROUTE 3	Wethersfield

FLOOD WATER

Parts of our district have been impacted by the recent flooding of the Connecticut River and its tributaries. Flood waters can carry raw sewage and chemicals that are unsafe. If you live in an area impacted by flooding, please refer to the attached document from the Connecticut Department of Public Health or visit the CDC's website for more information on flood water safety: <https://www.cdc.gov/disasters/floods/floodsafety.html>.

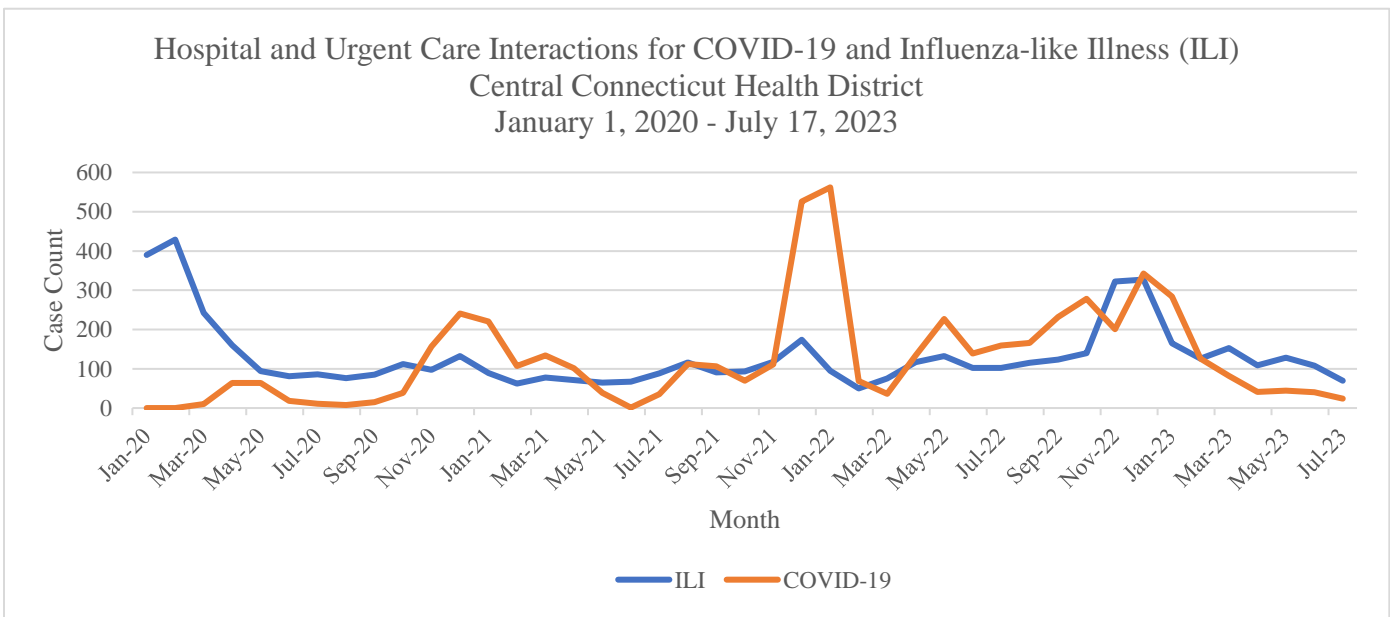
RAINWATER AND MOSQUITOES

With the recent heavy rain, expect to find standing water around your home. The district encourages residents to walk around their place of residence to remove any standing water they may find on playground equipment, tarps, pool covers, tires, uncovered trash cans, etc. If you have a rain barrel, consider placing a mosquito dunk inside to kill larvae. The infographic below describes ways to prevent mosquitoes in your yard. Mosquitoes are vectors for the following viral diseases that have been reported in Connecticut: West Nile, Eastern Equine Encephalitis, La Crosse, Jamestown Canyon, Cache Valley, and Trivittatus.



COVID-19

Data for COVID-19 and Influenza-like Illness Syndromic Surveillance was collected on July 17, 2023 from EpiCenter. The line graph to the right illustrates the syndromic surveillance of hospital and urgent care visits due to COVID-19 (those with a COVID-19 diagnosis and symptoms) and influenza-like illness (ILI).



NATIONAL RESPIRATORY AND ENTERIC VIRUS SURVEILLANCE SYSTEM (NREVSS) UPDATE:

Data for the following CDC disease surveillance programs were updated on July 12, 2023.

All data is preliminary and subject to change.

Norovirus

The Northeastern Region levels of PCR test positivity is below 8% . Norovirus can remain on surfaces for weeks at a time and is extremely contagious. Symptoms of norovirus include diarrhea, vomiting, nausea and stomach pain. <https://www.cdc.gov/norovirus/about/index.html>.

Human Parainfluenza Virus Types 1-3

Nationally, parainfluenza virus types 1 (HPIV), HPIV 2 and HPIV 3 antigen test positivity **dropped** below 1%. HPIV is associated with croup and can cause upper and lower respiratory illness and cold-like symptoms. For more information on HPIV please visit: <https://www.cdc.gov/parainfluenza/hcp/clinical.html>

Adenovirus

Nationally adenovirus antigen test positivity have **dropped** to 12%. Adenovirus is the most common cause of respiratory illness. Adenovirus can also cause gastroenteritis, conjunctivitis, cystitis, and less commonly, neurological disease. For more information please visit: <https://www.cdc.gov/adenovirus/hcp/clinical-overview.html>

Respiratory Syncytial Virus (RSV)

In the State of Connecticut, RSV (antigen and PCR) test positivity **undetected**. RSV can cause different types of respiratory illness, however it most commonly causes cold-like symptoms. It can cause serious illness, such as bronchitis and pneumonia in infants and young children and people who are immunocompromised or who have chronic lung disease. For more information please visit: <https://www.cdc.gov/rsv/clinical/index.html>

Rotavirus

In the Northeast region, rotavirus antigen test positivity remains **undetected**. Symptoms of rotavirus include vomiting and watery diarrhea for three to eight days. Fever and abdominal pain is also common. Rotavirus is primarily transmitted through the fecal-oral route. For more information please visit: <https://www.cdc.gov/rotavirus/clinical.html>

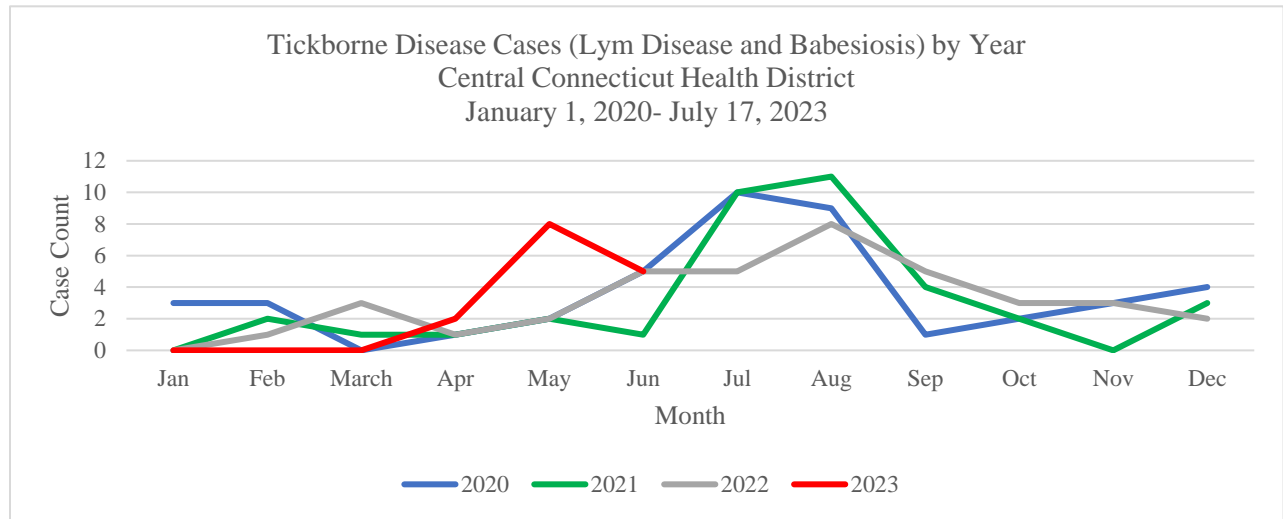
FOOD RECALLS

Click the link to know what foods have been recalled because they are contaminated. Please check your cupboards and throw out any of these items: <https://www.cdc.gov/foodsafety/>



TICK-BORNE DISEASE

The figure to the right illustrates the trend in Lyme Disease cases since January 1, 2020 in the district. We can expect to see more cases this year as ticks thrive in warm and moist conditions.



The Health District continues to promote staying up to date with vaccinations, practicing proper hand hygiene and the frequent cleaning of surfaces to continue to prevent the spread of respiratory illnesses and fomite transmission of other infectious agents.

If you need N-95 masks, at-home test kits, or help finding a primary care provider, please contact our health educator, Betty Murphy, at (860) 785-8380 or emurphy@ccthd.org. **If you need a COVID-19 Rapid PCR test, the CCHD Clinical Services is open for walk-in appointments on July 18th from 10 am to 2 pm at our clinic located at 506 Cromwell Avenue, Suite 200, Rocky Hill.** Our new clinic will be hosting an Open House on August 8th from 3:30 – 6:30, please stop by.

The Central Connecticut Health District is committed to improving the quality of life in our communities through prevention of disease and injury, fostering of a healthy environment, and promotion of the health of our residents.