



## Weekly Epidemiologist Report

May 18, 2023

Prepared by: Christine M. DePierro-Gacek,  
Epidemiologist

### COVID-19

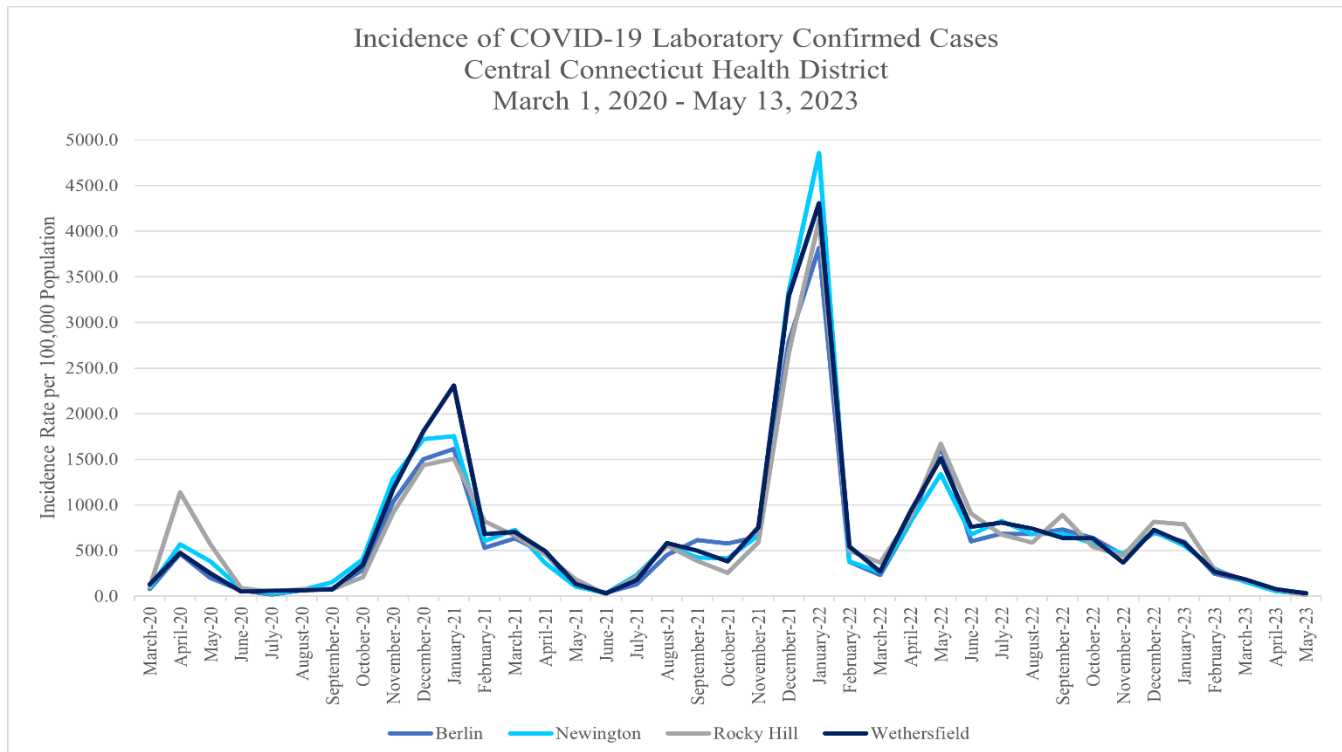
Data for COVID-19 was collected on Thursday, May 18, 2023, from the Connecticut Department of Public Health’s Local Health Line List Portal and data.ct.gov.

Table 1 below illustrates both cumulative data and the 7-day weekly change in the number of all laboratory-confirmed positive tests. All data in this report is preliminary and is subject to change. Figure 1.1 illustrates the trend in the incidence of laboratory-confirmed COVID-19 tests by town since the beginning of the pandemic in March of 2020.

**Table 1**

Town	Overall Summary	Cumulative	Past 7 Days
<b>Berlin</b> (Population 20,436)	Cumulative Cases	5052	2
	COVID-19 Associated Deaths	59	0
<b>Newington</b> (Population 30,014)	Cumulative Cases	8,140	4
	COVID-19 Associated Deaths	157	0
<b>Rocky Hill</b> (Population 20,115)	Cumulative Cases	5,313	3
	COVID-19 Associated Deaths	157	0
<b>Wethersfield</b> (Population 26,008)	Cumulative Cases	7,182	6
	COVID-19 Associated Deaths	67	0

**Figure 1.1**



# NATIONAL RESPIRATORY AND ENTERIC VIRUS SURVEILLANCE SYSTEM (NREVSS)

## UPDATE:

*Data for the following CDC disease surveillance programs were updated on May 16, 2023.*

### **Norovirus**

The Northeastern Region levels of PCR detection of norovirus have stabilized. Norovirus can remain on surfaces for weeks at a time and is extremely contagious. Symptoms of norovirus include diarrhea, vomiting, nausea and stomach pain.

### **Human Parainfluenza Virus Types 1-3**

Nationally, parainfluenza virus types 1-2 (HPIV) test positivity appear to increase, while HPIV 3 test positivity remains steady. HPIV is associated with croup and can cause upper and lower respiratory illness and cold-like symptoms. For more information on HPIV please visit: <https://www.cdc.gov/parainfluenza/hcp/clinical.html>

### **Adenovirus**

Nationally adenovirus test positivity continues to increase. Adenovirus is the most common cause of respiratory illness. Adenovirus can also cause gastroenteritis, conjunctivitis, cystitis, and less commonly, neurological disease. For more information please visit: <https://www.cdc.gov/adenovirus/hcp/clinical-overview.html>

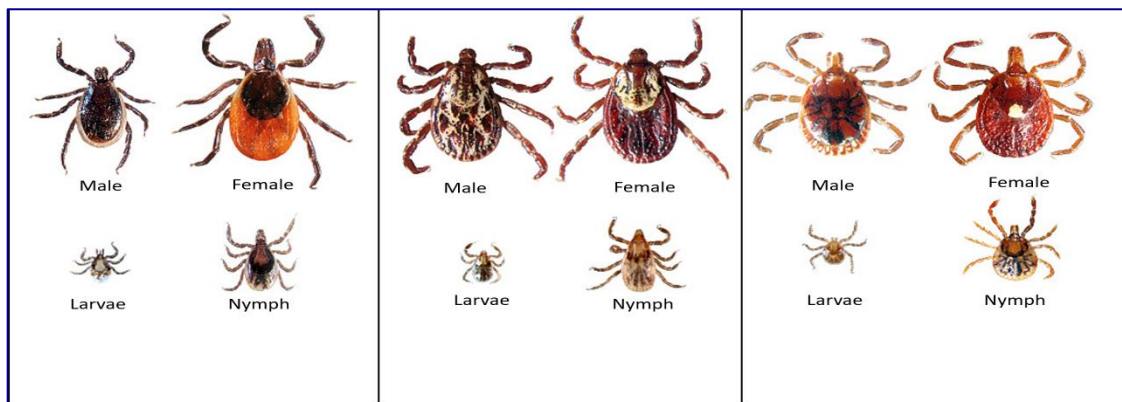
### **Respiratory Syncytial Virus (RSV)**

In the State of Connecticut, RSV (antigen and PCR) test positivity remains low and stable. RSV can cause different types of respiratory illnesses, however it most commonly causes cold-like symptoms. It can cause serious illness, such as bronchitis and pneumonia in infants and young children and people who are immunocompromised or who have chronic lung disease. For more information please visit:

<https://www.cdc.gov/rsv/clinical/index.html>

## TICK-BORNE DISEASE

The district is already seeing new cases of Lyme disease and babesiosis this year. We are expecting to see an increase in the number of blagged legged deer tick nymphs this May, June and July. Please visit <https://www.ccthd.org/vectorbornedisease> to find out how to properly remove a tick and how to submit it to the health department for testing. Below are illustrations of what the Blacklegged Deer Tick, American Dog Tick and Lone Star Tick look like in the different stages of their life cycle, respectively.



## **FOOD RECALLS**

The following foods are being recalled because they are contaminated. Please check your cupboards and throw out any of these items:

<b>Date</b>	<b>Brand-Names</b>	<b>Product-Description</b>	<b>Recall-Reason-Description</b>
05/09/2023	Nature's Wonder & Chang Farm	Bean Sprouts	Listeria monocytogenes
05/05/2023	Chang Farm, Nature's Wonder	Mung bean sprouts	Potential for Listeria monocytogenes
05/04/2023	Lay's	Classic potato chips	Undeclared milk
05/09/2023	Trader Joe's	Genova Pesto Packaged in Tubs Marked Hummus Dip	Product may contain undeclared milk and walnuts
05/09/2023	Simply To Go	Strawberry Yogurt & Blueberry Yogurt Parfaits	Undeclared soy
05/11/2023	Safeway	Oatmeal Raisin Cookies	Undeclared Peanut and Soy
05/12/2023	Robinson Fresh, Lancaster, Giant	Kale, Spinach, Collard Green products	Potential for Listeria monocytogenes
05/12/2023	lēf Farms	"Spice" packaged salad greens	Recall Cancellation Due to False Positive
05/11/2023	Ah	Black Fungus (Nam Meo)	Salmonella
05/14/2023	Gerber Good Start	Powdered Infant Formula	Potential Cronobacter sakazakii contamination
05/17/2023	Wegmans	Italian Classics Diavolo Sauce	Undeclared fish (Anchovy)

The Health District continues to promote staying up to date with vaccinations, practicing proper hand hygiene and the frequent cleaning of surfaces to continue to prevent the spread of respiratory illnesses and fomite transmission of other infectious agents.

If you need N-95 masks, or help finding a primary care provider, please contact our health educator, Betty Murphy, at (860) 785-8380 or [emurphy@ccthd.org](mailto:emurphy@ccthd.org).

*The Central Connecticut Health District is committed to improving the quality of life in our communities through prevention of disease and injury, fostering of a healthy environment, and promotion of the health of our residents.*