



# **Central CT Health District**

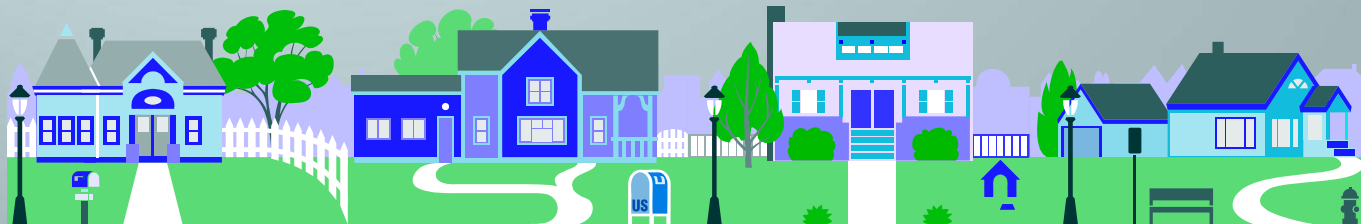
## **Community Health Report Card December 2009**

**Presented by:**

**Paul Hutcheon, Director of Health, MPH, R.S.**

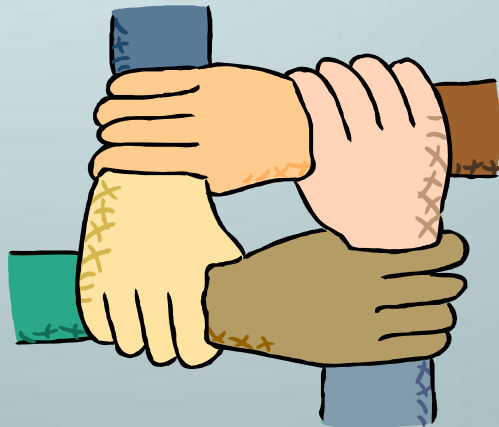
# Population

- Total District Population = 94,634
- District population has remained relatively stable for the past 5 years.
- Slight increase in population in Berlin, Newington, and Rocky Hill, but a decrease in Wethersfield.
- District's median age of 43-46 years; slightly higher than Hartford County (40) and State (40)



# Race %

- 87-94% of District residents are white, which differs from Hartford County (75%) and State (79%).
- The racial/ethnic minority population has remained at about approximately 4.0% over the past 5 years with Hispanics at the highest percentage at 4.4%.



# Socio-Economic Indicators

- District has a high school graduation rate of 97% vs. 92.6% for the State
- District's unemployment rate = 7.1% vs. 8.3% for Hartford County and 8.2% for the State
- District's poverty rate is 3.3% vs. 9.3% for Hartford County and 7.9% for the State
- There is an ↑ in Husky A enrollment for children for the District (fiscal year July 2008 – July 2009)



Source: CT DOL

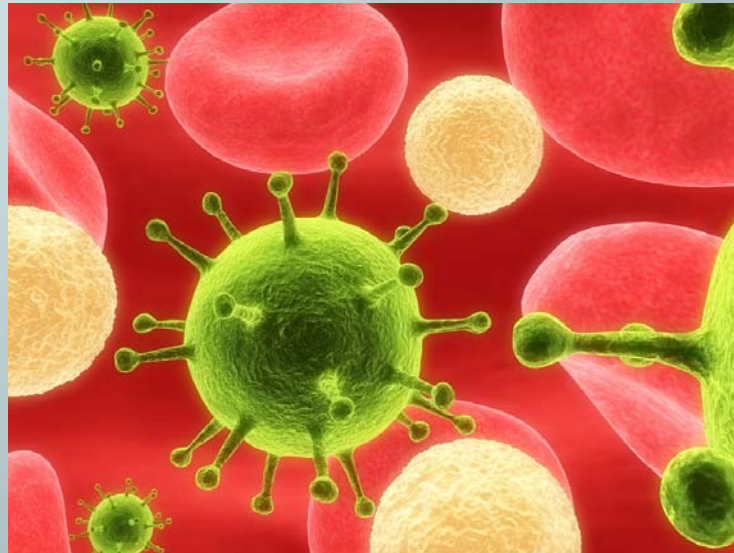
# Causes of Death

- Heart disease is the leading cause of death among adults in the District followed by cancer, stroke, chronic lower respiratory disease (CLRD), and unintentional injuries respectively.
- Over 80% of deaths in 2006 were age 65 and older, with 84% of these deaths occurring in those 75 and older.



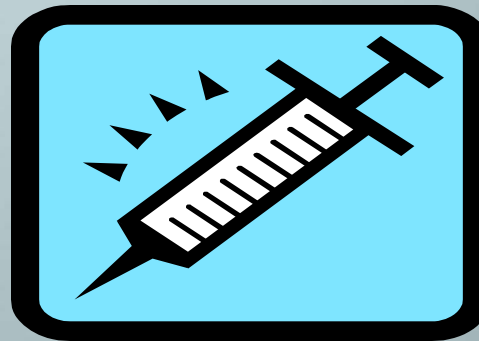
# Cancer Mortality, Both Sexes

- Lung cancer is the leading cause of cancer mortality in the District followed by colorectal and pancreatic cancers respectively.
- Among both, men and women, there has been an ↑ in colon and pancreatic cancers in all four District towns.



# Influenza/H1N1

- 3,192 people given seasonal flu vaccine at 8 clinics in all four towns
- Over 6,000 people given H1N1 vaccine at 25 clinics in all four towns
- From April 1, 2009 to January 26, 2010, 31 H1N1 deaths have been reported State-wide.



# Asthma

- Asthma is the leading cause of school absenteeism.
- Exact causes of asthma are unknown but are often triggered by environmental exposures including those in the home.
- CCHD received a three year grant from the CT DPH to implement the *Putting on Airs* in-home visitation program to assess and provide education to families to reduce emergency room visits and hospitalizations.



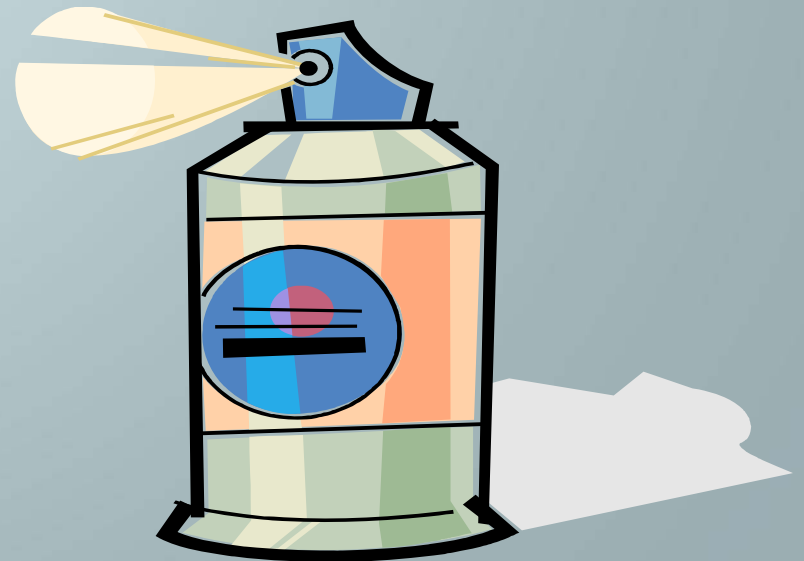
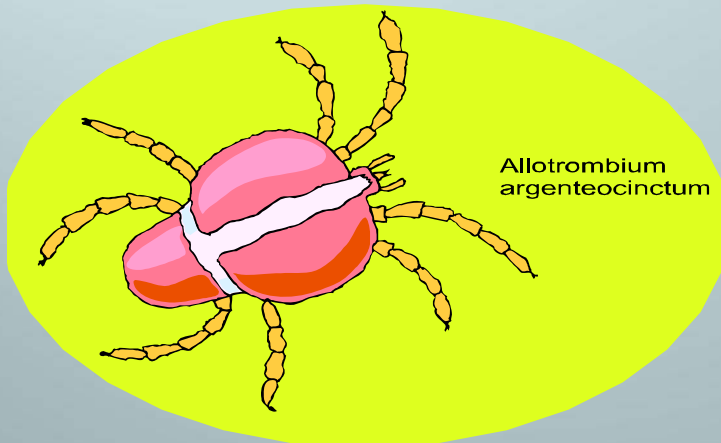
# Gastrointestinal Illnesses

- Each year, approximately 30 cases are reported to CCHD.
- The majority of cases are Salmonella and Campylobacter.
- CCHD has a Chief Sanitarian as well as four additional sanitarians located in each town that inspect food service establishments.
- Many cases occur from poor food preparation and handling at home.



# Lyme Disease

- The Incidence of Lyme Disease among CCHD residents is well below the state average with 21 cases reported in 2008.
- The key to preventing Lyme Disease is to limit exposure by taking personal protective measures.



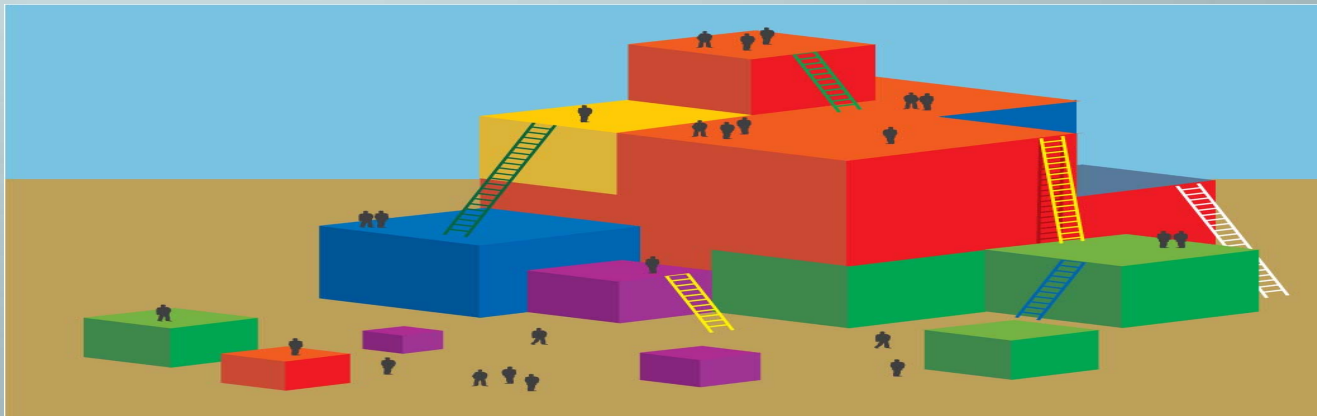
# Lead Screening and Lead Poisoning

- In January 2009, a State mandate became effective that required all 1 and 2 year olds to be screened for lead poisoning.
- In 2007, less than 30% of 1 and 2 year olds were screened for lead in our District
- CCHD recommends being aware of peeling and flaking paint as well as dust formed from renovation work.



# Current CCHD Programs

- **Screenings and Education**
  - Glucose (Blood Sugar) screenings
  - Diabetes Self-care education classes
  - Cholesterol screenings and education classes
  - Pedicare Foot Clinics
- **Community Health Education**
  - Smiles for Life – Dental Cleanings for Seniors
  - Putting on Airs – Asthma Home Visitation Program



# Thank you!

Please visit our website at  
[www.ccthd.org](http://www.ccthd.org)